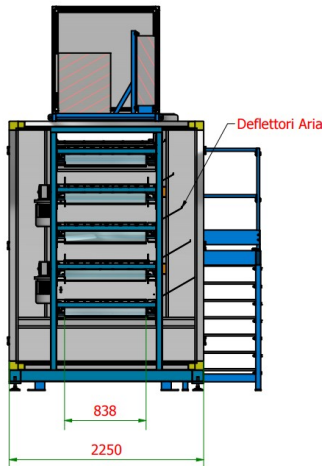
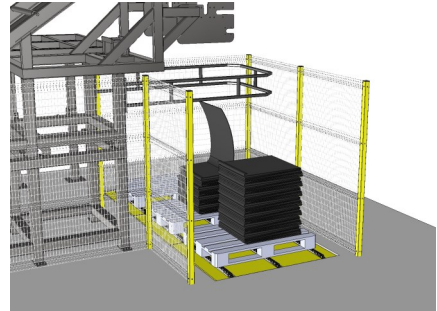
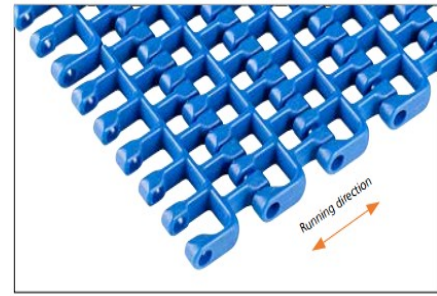
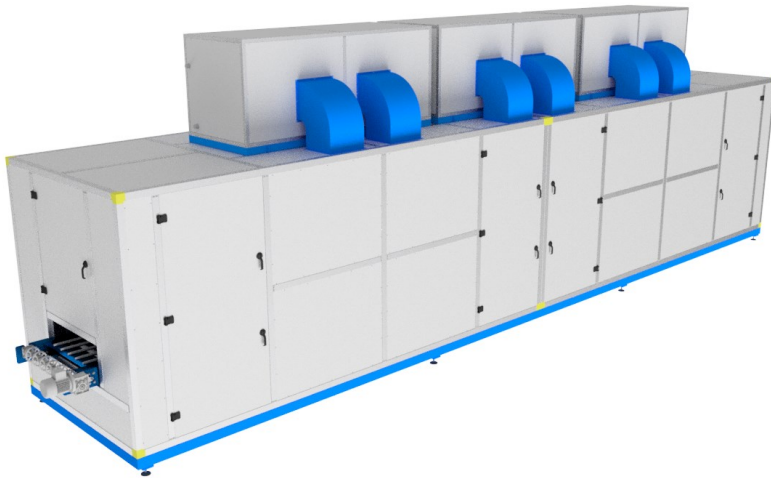


MULTILAYER BATCH OFF



- The optimization of the airflow has been carefully studied to ensure uniformity in contact times along the entire length of the compound, thus guaranteeing consistent performance across each layer of the equipment.
- Modular belt in ppu, opened surface 50%, standard width 830 mm.
- Each belt is supported by 4 stainless steel profile covered with Hi Density PE for high grade of sliding and Low wearing of main components.
- N° 4 lateral operator doors, 1 frontal inspection door, 1 Backdoor and Inspection window are available.
- Palletiser and weighing station are available as optional at the end of the line.
- Batch off can be 3/5/7 Floors with length customized following customer needed.



We ensure significant energy savings through the adoption of an advanced thermal insulation system, utilizing 50 mm insulating panels. This solution is further enhanced by the use of special extruded aluminum profiles and an intelligent management system integrated into the PLC. This approach reduces energy consumption, translating into a substantial decrease in operational costs for the system. Our offering thus combines efficiency, innovation, and sustainability, laying the groundwork for a greener, more cost-effective future.

FEATURES AND TECHNICAL DATA

